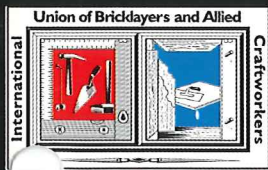


QUARTERLY UPDATE

- Bricklayers • Stone Masons • Tile Layers
- Marble Masons
- Terrazzo • Blocklayers
- Finishers • Shopmen
- Cement Masons
- Pointers - Cleaners
- Caulkers • Concrete Products Specialists



SEPTEMBER 2012

VOLUME 20, NUMBER 3

INSIDE THIS ISSUE

POLITICS: BAC Endorsed Candidates/**2**

TRAINING:/**4**

MEMBER RECOGNITION:/**6**

BUILDING: Wadena School to open/**8**

EVENTS: Calendar/**11**

GOVERNMENT: Electing Legislators/**12**

LOCAL TELEPHONE

612-379-2966

OUTSTATE AND ND

1-800-257-8636

BAC INTERNATIONAL UNION

1-888-880-8222

FAX

612-379-8754

INTERNET RESOURCES

General Information:

BAC1MN-ND.org

Apprenticeship and Training:

BACtraining.org
or phone

651-487-5500

BENEFITS

Check the Zenith Administrators Web site,
zenith-american.com

Call 651-256-1801 or
1-800-879-4412

Luxury Apartment Homes add to Uptown's Vibrant Lifestyle



Credit: ESG Architects



Photo Credit: Paul Sinkler

On July 25, 2012, a groundbreaking ceremony was held to announce the construction of Elan Uptown in Minneapolis, MN, a 591-unit apartment home community.

Construction has begun on Elan Uptown, a planned-591-unit, mid-rise luxury apartment community in Minneapolis, MN. Phase 1 will be completed by fall 2013 delivering 203 apartments ranging in size from 560 to 1,300 square feet. Phase 2 will be completed by summer 2014 delivering an additional 388 apartment homes.

This construction project has great significance because it is the single largest investment by Multi-Employer Property Trust (MEPT) in the Minneapolis area. The BAC Local Union Pension Fund is invested with MEPT. Greystar, a second investor, says "...the total investment... over the life of the project will generate 1.5 million "green" job

Continued on Page 11

Penfield Apartments Strengthens Heartbeat of City



Photo Credits: Weis Builders



St. Paul Mayor Chris Coleman was the guest speaker at the groundbreaking ceremony held on July 16 to announce the construction of Penfield Apartments, located in the heart of downtown St. Paul, MN.

The Penfield Apartments is a 254-unit apartment complex built in the heart of downtown St. Paul in conjunction with the city. The 6-story, mixed-use structure will be conveniently located within walking distance of the Central Corridor Project for ease of transportation. It will feature a 28,000 square foot Lunds grocery store on its ground floor level, the only full-service market in the area. It will stand on the location of the old police headquarters with the historic façade of the original public safety building built in to its construction. The project is LEED Silver certified. Weis Builders is the general contractor. It's expected to open in late 2013 at a cost of about \$36 million.

Look for more information in future issues of Quarterly Update as the project progresses.

November Elections

Let's Elect Candidates Who Put Middle Class Families First

To read this article in its entirety, log on to <http://www.bac1mn-nd.org>.

The primaries are over and the political campaigns are quickly picking up speed. The November general elections will soon be here. We must elect into office and continue to support candidates who will be the voice of pro-working families in the legislature. Those who help rebuild the middle class and protect Social Security and Medicare and invest in the future will get our vote. We need candidates who will safeguard and continue working with President Obama and his administration on the positive changes they have set in motion. To do so will ensure a growing and stronger working class America with access to reasonably priced, comprehensive health care, a growing and thriving economy that is energy independent, and a more secure future for generations to come.

Bricklayers and Allied Craftworkers Local 1 MN/ND endorse the following candidates for the November 2012 general elections:



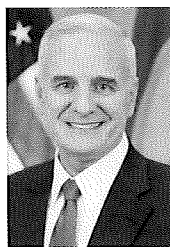
Barack Obama and Joe Biden, DFL

– Within his first month of taking office, President Obama signed into law the American Recovery and Reinvestment Act of 2009 designed to cut taxes for small businesses and 95 percent of American families. He passed the Affordable Care Act in March 2010 making health care affordable to middle



class America. He has increased Pell Grant funding and extended the American Opportunity Tax Credit for college students. He has brought troops safely home from Iraq and has begun the same in Afghanistan. He continues to fight for the middle class where hard work, accountability and democratic fairness must remain the building blocks of America.

MINNESOTA



Minnesota Governor Mark Dayton's leadership has prevailed in recent months by passing a bill for the new Vikings stadium. A bipartisan majority of legislators decided against placing

the "Right to Work" constitutional amendment on November's ballot. Still there remains much work to be done to continue to build a better Minnesota. The Voter ID amendment must not pass. Doing so would put greater hardship on college students, senior citizens and many others while incurring greater financial burden on the State's budget if only to simply address an issue where little or no concern lies. Instead we must focus on candidates who will support the middle class and fight for legitimate issues that we are faced with today such as respectable wage jobs, affordable health care and a secure economic future. We must be steadfast on building and maintaining a cohesive team through Dayton's leadership.



Amy Klobuchar, DFL incumbent U.S. Senator, serving since 2007 – Klobuchar continues to be the voice of the middle class. She fights for much needed resources and support for the

military. She believes everyone should be able to earn a respectable living, have affordable health care, provide a solid education for their children and look forward to a secure economic future.



Tim Walz, DFL incumbent U.S. Representative for District 1, serving since 2007 – As a member of the Bipartisan Energy Working Group, Walz is working with others on a

comprehensive plan that will allow the U.S. to take control of its energy

future. He supports extending middle class tax cuts. Walz voted for the Affordable Care Act so all can receive medical care that is fairly priced and accessible.



Mike Obermueller, DFL candidate for U.S. Representative for District 2 – He believes the national debt can be cut by demanding that government agencies be held

accountable. He supports retraining the jobless workforce, encouraging entrepreneurship and rewarding businesses that create and retain jobs for its people within American borders.



Brian Barnes, DFL candidate for U.S. Representative for District 3 – As a Lt. Commander in the U.S. Navy Reserve, Barnes desires to serve the American people in an even greater

capacity by seeking political office. His balanced and common sense approach extends to bipartisan responsibility for national debt, and defending and securing Social Security and Medicare.



Betty McCollum, DFL incumbent U.S. Representative for District 4, serving since 2001 – McCollum demands bipartisan teamwork in job creation and preserving resources that sustain

families during financial hardships. As a member of the Labor and Working Families Caucus, she works to support the livelihood of the working and middle classes by accessible and fair union representation.

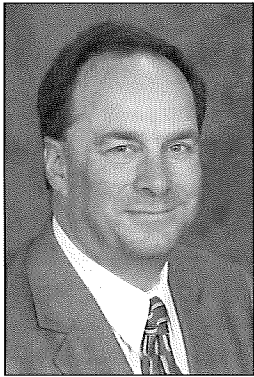


Keith Ellison, DFL incumbent U.S. Representative for District 5, serving since 2007 – "Prosperity for Working Families" continues

Continued on Page 5

From the President

Mike Cook, President/Secretary-Treasurer



Health Trustees Announce New Extend Retiree Plus Program for Medicare Supplement Retiree Coverage

Now that the United States Supreme Court has spoken with respect to affirming the constitutionality of health care reform, it is full speed ahead with respect to this rapidly changing environment. The trustees of the BAC Health Fund, in light of these dramatic regulatory changes, have been examining ways that the Health Trust can better serve the membership. One area that has received attention is Medicare supplemental retiree health insurance. For individuals that are entitled to coverage under Medicare, there exists a dynamic marketplace that offers a huge variety of Medicare supplement programs. Simultaneously, the Medicare supplement program offered by the BAC Health Fund has lost purchasing power as a result of shifts and subsidies in this marketplace, as well as the fact that there is little negotiating power for a plan with the small number of retirees that we enroll in our own self-insured program. Also, the health care costs of our retiree group, on a per person basis, exceeds the average cost in most of the larger insurance pools. Therefore, these other selections are in a position to deliver more “bang for the buck” than the program currently in place. The trustees, as a result, searched for a better way to serve the membership with respect to increasing the value of this extremely important coverage. They believe that they have found a better way to provide this important insurance to the membership, increasing both value and choices available.

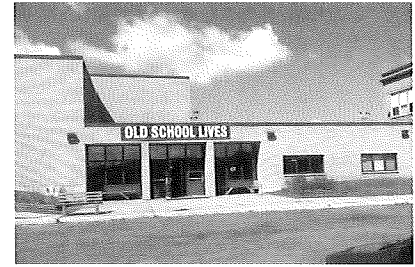
The Trustees of the Health Fund have engaged Extend Health, Inc., to provide communications, outreach and enrollment assistance to the membership on behalf of the Fund to facilitate individuals’ enrollment in Medicare Supplemental Retiree Insurance products through Extend Health’s Program. Extend will make available, through their system, most licensed Medicare supplement programs available in the State of Minnesota, many of which provide extensive out of area coverage for those that spend substantial time outside the State of Minnesota.

These programs include: (a) Individual Medigap plans; (b) Individual Medicare Advantage Plans; (c) Individual Medicare Part D Plans; (d) Individual dental plans; (e) Individual vision plans; and (f) Long-term care products. **These changes are effective, Jan. 1, 2013 (which is the date that individual coverage shall become effective; the group Medicare supplement policy will no longer exist as of Dec. 31, 2012 at midnight).**

The retiree pre-funded premium plan will continue to exist; your dollar amounts will be deposited in your Health Reimbursement Account, and will be available, as in the past, to subsidize the costs of retiree health care.

Watch for important announcements coming in the mail regarding these changes. Please remember that it is essential that you sign up for an individual product prior to the end of the enrollment period (Dec. 1, 2012). If you need any assistance, please call the dedicated BAC Local 1 MN/ND Extend Health toll free number at 1-855-835-3873 or Zenith American Solutions at 651-256-1801 or 1-800-879-4412.

New Training Center in Cotton, MN



Thanks to Business Representative Stan Paczynski’s eagle eyes and investigative work, BAC Local 1 MN/ND will be opening a new training center in Cotton, MN. “I drove by the building, saw a sign and dug in to it,” he says. The training center is located in Old School Lives (*shown above*), the former Cotton High School, which is now owned by a community group. The workshop is 2,000 square feet with an attached 300-square-foot classroom. It’s conveniently located 36 miles northwest of Duluth, MN, and 27 miles south of Virginia, MN. “Everybody has to drive a little bit so it’s the perfect stop for the area we cover up here.”

“We are so excited for our collaboration with the bricklayers union,” says Ginger Kinsley, administrative director of Old School Lives, Inc. “Its presence in our community brings hope for the future here. The union brings a new face to our community with the projects we are hoping to collaborate on.”

The center will provide hands-on training for apprentices and tile setters and journeyman upgrade classes. It will also offer product awareness including safety and flashing classes.

“We are excited to be able to provide training to the people up north,” says Rick Martagon, apprenticeship coordinator. A grand opening is scheduled for October 15 during which there will be a gunnite demonstration and hands-on training. Grilled hotdogs, brats and burgers will also be served from noon to 5 p.m. All are invited.

A description of the gunnite class and registration information are provided on page 4.

2012 Journeyman Upgrade Schedules

All journeyman are welcome to attend any upgrade with RSVP

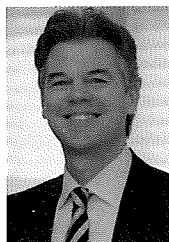
Call 651-487-5500 or visit us online at www.bactraining.org

CTC: Cotton Training Center
MTC: Metro Training Center
SLH: St. Cloud Labor Home
ROC: Rochester Labor Home

Date	Time	Branch Of Trade	Class
9/19/12	4 - 8 p.m. MTC	Tile	Laticrete Shower Systems
<p><i>Learn the new techniques in shower assemblies from Laticrete!</i> Bonded flange drain - Used with the traditional mud bed, Center placement drain in shower, 5-inch drain assembly with tile-in version Linear drain, Use large format tile Mud bed used, Tile-in drain option. Only two components with multiple sizes Pre-Sloped Shower Pans, Curbs. Seats, Niches and accessories - Lightweight expanded polystyrene One-piece pre sloped to drain-no mud or liner needed Site sizable with factory installed drain body Factory applied waterproofing to speed up the installation</p>			
09/27/12	4 - 8:30 p.m. MTC	All Trades	Core4/PRO-10
<p><i>The Labor-Users-Contractors (LUC) committee includes top construction industry members in Minnesota. LUC's only goal is to improve and further the union construction industry. LUC developed PRO-10, a professional training course, to go beyond technical skills and develop cooperation and an understanding of each person's role in an effort to maintain and grow market share.</i></p>			
10/15/12	9 - 5 p.m. CTC	All Trades	Grand Opening
<p><i>The Bricklayers & Allied Craftworkers Apprenticeship Training Center is excited and proud to announce the opening of our new Training Center for our northern members located at the former Cotton High School; 9165 Hwy 53, Cotton, MN 55724-8027. The space has a 2000 square foot shop and a classroom. Brick and Tile Apprenticeship classes will resume this fall and Journeyman upgrade classes are in the process of being scheduled. Check out the schedule at www.bactraining.org. We will be cooking burgers, brats, and hot dogs from noon-5 p.m.!</i></p>			
10/15/12	9 - 5 p.m. CTC	Brick/Refractory	Refractory/Gunite Familiarization
<p><i>Introduction to dry shotcrete or gunite will include a review of equipment and techniques for the dry shotcrete process. This will be a hands-on day with time for all attendees to operate both the shotcrete "gun" and learn fundamentals of nozzleman application. REED and ALLENTOWN equipment will be available. Refractory and concrete applications will be discussed.</i></p>			
10/22/12	4 - 9 p.m. ROC	All Trades	1st Aid/CPR/AED
<p><i>Safety Certifications through Minnesota Safety Council that includes 1st Aid, CPR, and AED (Use of automated external defibrillator).</i></p>			
10/30/12	4 - 8:30 p.m. MTC	All Trades	Core4/PRO-10 (Repeat Session)
11/15/12	4 - 9 p.m. MTC	All Trades	1st Aid/CPR/AED (Repeat Session)
11/30/12	7:30 - 2 p.m. MTC	Bricklayers	Stone Pavers/Mortar Set
<p><i>Learning and practicing techniques for setting stone pavers in dry tamp and thin set mortars. The class will include how to prep the base, mix slurries, dry tamp mortar, and thin set mortars, as well as introduce you to some of the admixtures, and reinforcements available for paver installation.</i></p>			
12/4/12	4 - 8:30 p.m. MTC	All Trades	Core4/PRO-10 (Repeat Session)
12/17 - 12/21/12	4 - 8:30 p.m. MTC	All Trades	OSHA 30
<p><i>This course for private sector personnel covers OSHA policies, procedures and standards, as well as construction safety and Health principles. Topics include scope and application of the OSHA construction standards. Special emphasis is placed on those areas that are the most hazardous, using OSHA standards as a guide. Each member will have the following qualifications at the successful completion of this course; Scaffold qualification in accordance with CFR 29, powder actuated tool certification, and Signal and Rigging in accordance with CFR 29. Members must attend all classes to attain OSHA 30 certification. Classes are held all week.</i></p>			
TBD	4 - 9 p.m. MTC	All Trades	Blueprint Reading
<p><i>Basic Blueprint Reading held one night a week for four weeks. Class size is limited to 10 students, Call to be put on the list ASAP. We will add additional dates to meet demand.</i></p>			

November Elections, *Continued fromn Page 2*

to be Ellison's focus by supporting individuals' right to join unions, working to fortify the middle class and protecting Social Security, Medicaid and Medicare. He continues to oppose voter ID and champions legislative bills that provide greater family leave benefits.



Jim Graves, DFL candidate for U.S. Representative for District 6 – His solid Midwestern values have helped him become a successful CEO and businessman who understands

and demonstrates financial accountability. His “pro-business and pro-government” mindset gives him a unique perspective on dealing with issues that are affecting today's middle class.



Collin Peterson, DFL incumbent U.S. Representative for District 7, serving since 1991 – As a ranking member of the House Agricultural Committee, he's committed to

helping livestock producers during periods of drought, decreased crop production and higher feed costs. He endorses American Federation of Teachers working to provide greater educational opportunities in nursing, research and student funding within the school systems.



Rick Nolan, DFL candidate for U.S. Representative for District 8 – This former U.S. Representative is returning to the political arena to fight for “single payer

universal health care,” the Employee Free Choice Act and to reform and stabilize the pension and Social Security systems. He'll support job creation through eliminating Bush tax cuts for the rich and lessening U.S. military presence in allied countries.

Don't forget to vote for your district's State Senator and

Representatives. All 67 State Senate seats will be on the ballot as well as all 134 House seats. Republicans gained control of the Senate and House following the November 2010 election. Redistricting could give the Democrats an advantage to both in this November's elections.

For a complete list of 2012 Minnesota AFL-CIO endorsed candidates, log on to <http://www.mnaflcio.org>.

For information on where to vote, Minnesota residents log on to www.sos.state.mn.us or for further info, log on to www.weareminnesota.org.

NORTH DAKOTA

North Dakota has become the second largest oil producing state following Texas resulting in the lowest unemployment rate of all 50 states according to the Bureau of Labor and Statistics. Yet with the oil boom in western North Dakota comes growing pains of a weak infrastructure and rising property values compounded by only a slight percentage of state oil tax revenues being reinvested back in to building a sustainable living and working environment.

North Dakota's candidates for Governor, House and Senate have proven records of supporting working families as they gain ground in the state. Together they are building a campaign structure to revitalize the Democratic/NPL party and re-engage with union members in this Right to Work state. We must continue to support candidates who make the middle class top priority by fighting for respectable wages and short and long term benefits through union representation.



Ryan Taylor, Dem/NPL candidate for Governor – Taylor has been a member of the State Senate since 2003. Born and raised in North Dakota, he seeks the governorship in an effort to reach

a balanced bipartisan approach to dealing with the state's energy development, an affordable childcare system and property tax relief.



Heidi Heitkamp, Dem/NPL candidate for U.S. Senate – Heitkamp served at the state's attorney general from 1993 to 2001. She supports initiatives that will provide thousands of jobs to North

Dakotans and reduce the national debt. She will work to ensure the U.S. government becomes a partner in bettering the state's infrastructure by returning a substantial portion of royalties to the state.



Pam Guleson, Dem/NPL candidate for U.S. House – As a former State's House of Representative from 1993 to 2009, Guleson serves on the North Dakota Farmers Union. She focuses on

eliminating tax incentives that take away job opportunities for Americans. Guleson believes oil companies should reinvest their profits into building a stronger infrastructure for the state and its residents.

Don't forget to vote for your district's State Senator and Representatives. A total of 25 State Senate seats will be on the ballot as well as 50 House seats. Republicans currently hold a great majority of seats in the Senate as well as the House so it's vitally important that we vote for candidates who put middle class families first.

For a complete list of 2012 North Dakota AFL-CIO endorsed candidates, log on to <http://www.ndaflcio.org>.

For information on where to vote, North Dakota residents can log on to <http://www.nd.gov/sos>.

For a comprehensive overview of U.S. politics, including the Obama administration and complete candidate and voting information by state, log on to www.mytimetovote.com.

See you at the polls on November 6!



Oakdale, MN: 50-Year Gold Card Members
Gold Card Luncheon on July 12 at the Prom Center

Front row, left to right: President of IUBAC James Boland, Ronald Winter, George Dapper, and William Cooley.
Back row, left to right: President Michael Cook, Executive Vice President Mike Hawthorne, IU Regional representative John Mason, Roger Benick, Corky (Tom) Denisson, Udo Walter, Vice President Richard Kentzelman, and Vice President Terry Wong.



Oakdale, MN: 40-Year Gold Card Members
Gold Card Luncheon on July 12 at the Prom Center

Left to right, front row: President Michael Cook, 40-year member Louis Geislinger, and Executive Vice President Mike Hawthorne.



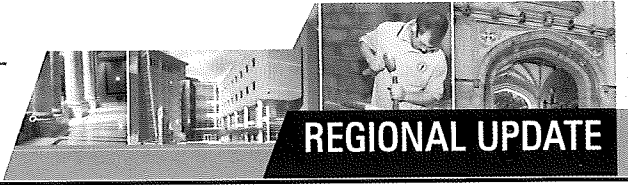
Oakdale, MN: 25-Year Gold Card Members
Gold Card Luncheon on July 12 at the Prom Center

Front row, left to right: IU Regional Representative John Mason, President of IUBAC James Boland, Vice President Dick Kentzelman, Greg Loya, and Marvin Karnick.
Back row, left to right: President Michael Cook, Executive Vice President Mike Hawthorne, Dallas Smith, Jeff Anderson, Wayne Johnson, Diane Linder, Monte Linder, and Vice President Terry Wong.



Rochester, MN: 40-Year Gold Card Members
Gold Card Dinner on June 1 at the Eastman

40-year member John Beth receives his certificate from Mark Caron, 40-year member John Beth, and Executive Vice President Mike Hawthorne.



IMI Quarterly Update for Summer 2012 Programs

By Mark Wickstrom, Director of Market Development & Technical Services

IMI creates job opportunities for BAC members by showing building owners, architects and engineers that the best solution for a project is a skilled union craftworker using the best masonry system possible.

The programs conducted in our area in the last few months are a perfect illustration of that strategy. We educate our members to be the best prepared workforce to keep pace with industry demands and code updates. We educate the entire building team of owner, architect and engineer regarding the advantages of designing with masonry systems using a variety of techniques, including lecture and hands-on programs to directly demonstrate the skills of the BAC members. Most recently, we reached out to engineers with a program that brings the Structural Masonry Design System software to their firms for live demonstrations.

Through an organized strategy of educating our members and our industry partners, we are working toward the goal of making masonry materials and systems as user friendly as possible for all those involved.

Architectural Programs

Team IMI presented “Masonry Day” for the Minnesota chapter of the Association of Licensed Architects (ALA) during their May 11 meeting.

“Structural Masonry for Non-Engineers” gave architects and contractors the knowledge to include structural masonry in a project. “Designing & Detailing with Durable Masonry Walls” focused on the basics of designing, detailing, and specifying masonry systems.

At the conclusion of the program, the entire group moved to the shop area for discussion of flashing details and wall mockups on display, as well as a quick review of the mock ups from the 2012 University of Minnesota Masonry Workshop.

Member Training

IMI Director Tom Nagy presented the two-day, 16-hour Supervisor Certification Program (SCP) Foreman Training – Level 1 with me to 25 members of BAC Local 1 MN/ND. The objective of this program is to develop highly skilled, confident and effective supervisors for the union masonry industry.

Update on Minnesota Masonry Coalition

Following the success of the first round of engineering firm visits this past January, a second round of visits was conducted by the Minnesota Masonry Coalition on July 30-31. IMI Director of Engineering Diane Throop, P.E., and Sam Rubenzer, P.E., FORSE Consulting, LLC, presented the SMDS software program to two new firms, OPUS Group Engineering Department and Clark Engineering.

On August 21, 2012, IMI presented “Masonry Day”, a program for design professionals, construction managers, building owners, facility managers, all signatory trowel trade contractors, and other Industry partners.

IMI Director of Architectural Education Pat Conway presented two programs, “Lessons Learned in The Masonry Field” and “Contemporary Masonry Design & Details”. These programs focused on the most commonly made design mistakes, with a wide variety of examples and masonry details. I co-presented and conducted a walk-through of prebuilt masonry details, as well as a demonstration of field installation techniques at the BAC Local 1 MN/ND training center.

For questions regarding any of these programs or for information on future programs, please contact me at my office at 612-332-2214, or my cell at 612-840-8695 or email me at mwickstrom@imiweb.org.

To learn more about the International Masonry Institute, visit www.imiweb.org.

QUARTERLY UPDATE

Quarterly Update is published four times a year by Bricklayers & Allied Craftworkers Local 1 Minnesota/North Dakota to communicate with its members.

Postmaster: Send address corrections to Bricklayers & Allied Craftworkers Local 1 Minnesota/North Dakota, 312 Central Avenue, Suite 328, Minneapolis, MN 55414

President Mike Cook

Editor Patricia Johnson

Design & Production Peggy Zetah

QUARTERLY UPDATE

Bricklayers & Allied Craftworkers
Local 1 Minnesota/North Dakota
312 Central Avenue, Suite 328
Minneapolis, MN 55414



Presorted
First Class Mail
US Postage
PAID
Twin Cities, MN
Permit # 8314

GOVERNMENT



POLITICS – Our Issues

By Shar Knutson,
President of the
Minnesota AFL-CIO

Electing Legislators Who Share Our Priorities

It may not seem so right now, but the November elections are right around the corner. You probably hear this every two years, but this election is critical for working Minnesotans. Our work starts by electing a new majority to the Minnesota House and Senate.

Our elected officials are supposed to work for us, but the current legislature has consistently put corporate special interests above the interests of working Minnesotans—wasting our tax dollars on the wrong priorities.

They came into office telling the public that their priority was “jobs, jobs, jobs.” Instead, they offered divisive constitutional amendments and attacked working people. They attempted to cut wages for



construction workers. They tried to gut the benefits that public sector workers have negotiated and earned. They even attempted to put a so-called “Right to Work” amendment on the ballot in an attempt to silence our voice at work. We deserve better.

Middle class Minnesotans deserve legislators who share our values and priorities: a strong, growing Minnesota economy; family-sustaining jobs, and education opportunities for our children to compete in a global economy.

That’s why Minnesota’s Labor movement is committed to electing a pro-middle class majority that will work with us in building a better

Minnesota instead of attacking the rights of working people like construction workers, police, firefighters, nurses, teachers, highway workers, and public service providers.

I hope you will join your union brothers and sisters in knocking on doors, making phone calls, and talking one on one with your friends, neighbors, and co-workers about why we need a better legislature—a middle class majority that will stand up for working Minnesotans and fight for the values that we all believe in.